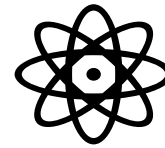


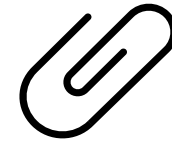


SAP HANA 2.0, definition, do's, don'ts and outcomes

Definition and key points



**A DB only upgrade
with some
dependencies**



**Support for HANA 1.0
DB extended to 2021**

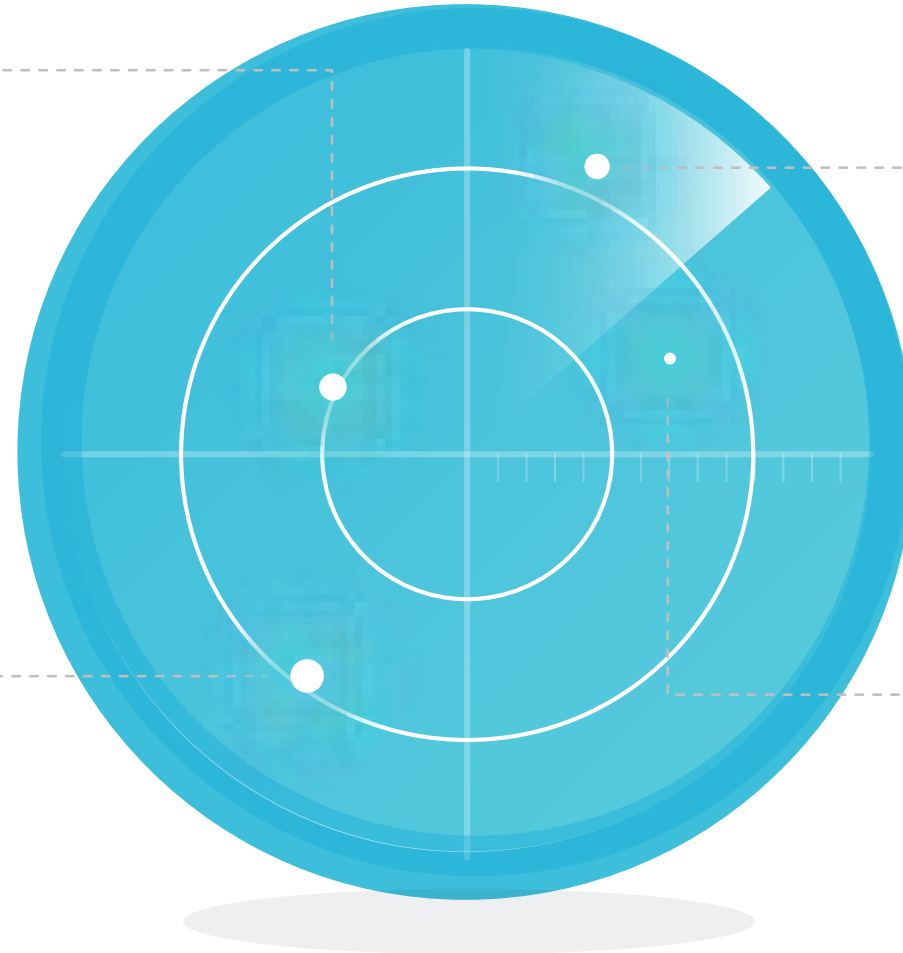
Improvement Areas

HANA Administration

Security tools

DR Management

Fast startup time



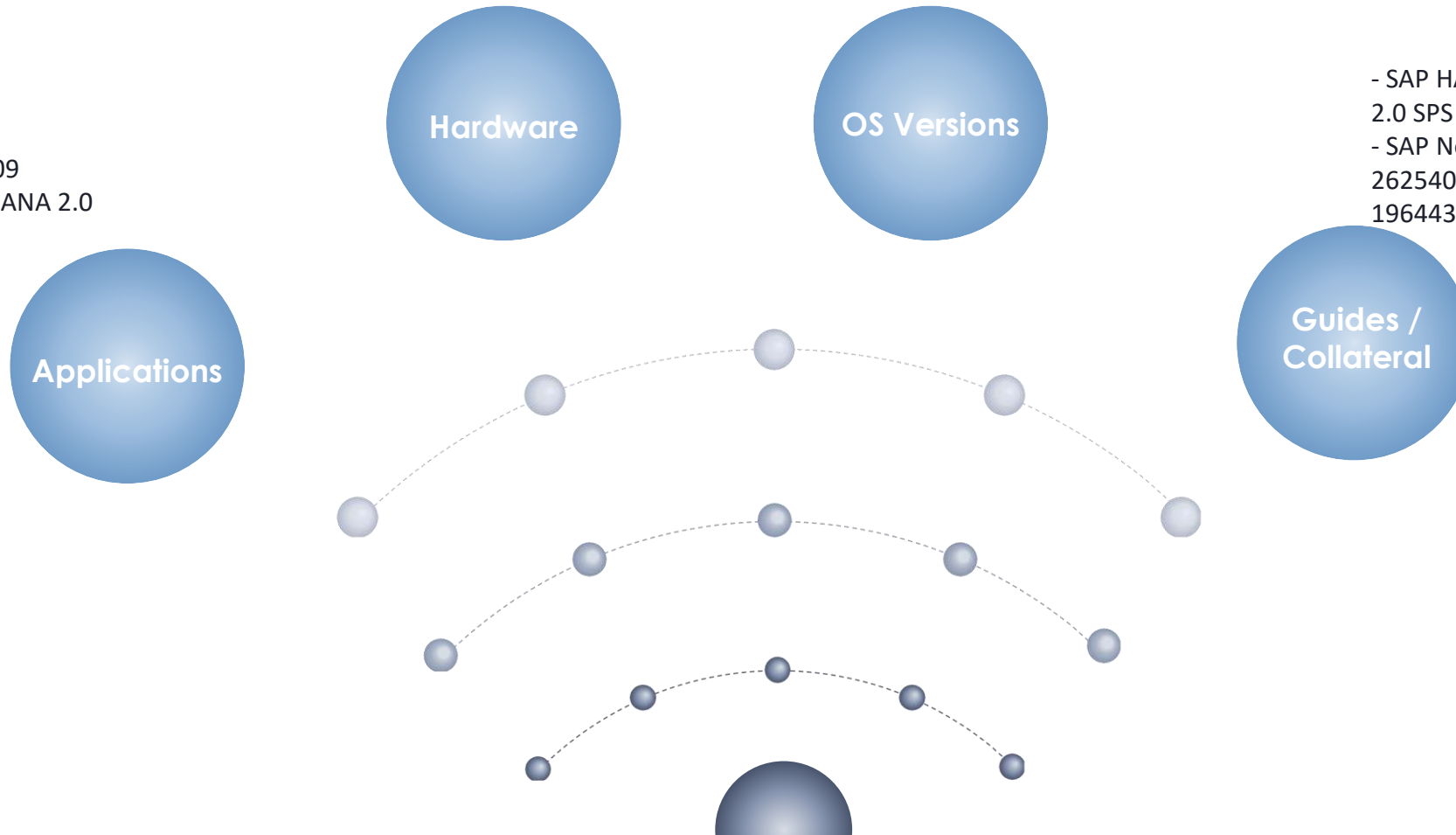
Pre-requisites / Do's

- Intel Ivy Bridge or Westmere CPU
- IBM POWER8 CPU
- www.sap.com/dmc/exp/2014-09-02-hana-hardware/enEN/iaas.html

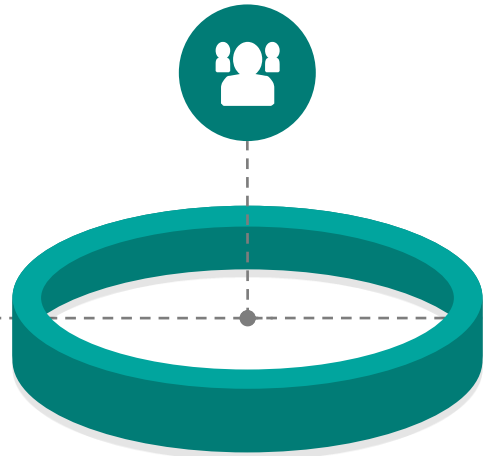
- Minimum SUSE Linux 12 SP1
- Recommended SUSE Linux 15 SP1

- S/4 1809
- BW/4HANA 2.0

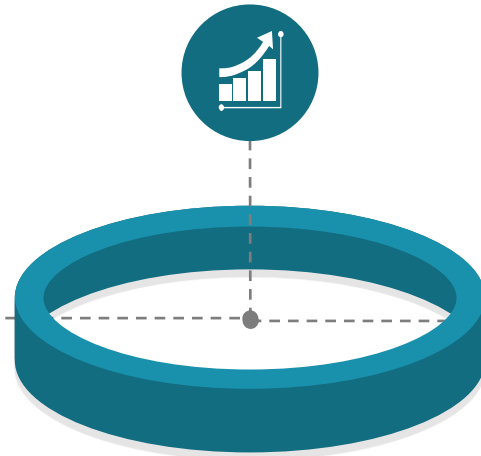
- SAP HANA Server Installation and Update - 2.0 SPS 04 (go to minimum sps04)
- SAP Notes 2347382, 2524661, 2625407, 2622671, 2399995, 2235581, 1964437, 2316233. 1380654 etc.



You should not.....

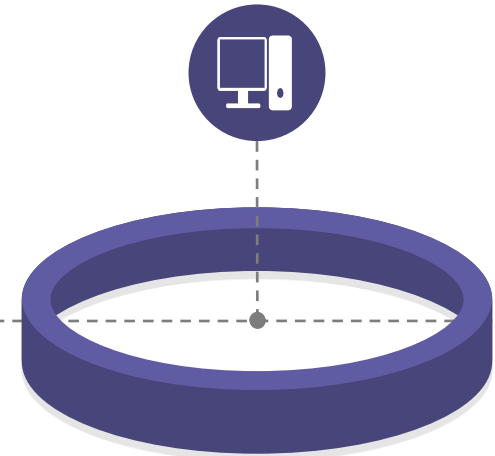


Run before walking properly



Upgrade if not needed

- Roadmaps / Strategic direction



Compromise on Hardware



Outcomes



Tenant Monitoring and Administration

[Back to top](#)

Overall Tenant Statuses

1 Host - 1 Database



Top Tenant Databases with Alerts

High-Priority Alerts

System DB Monitoring and Administration

[Back to top](#)

Overall System Database Status

8 Services



System Database Alerts

[Show all](#)

Availability	Backup	CPU Usage	Configuration	Diagnosis Files
0	0	0	0	0
Disk	Memory	Security	Sessions / Transactions	Other
0	0	0	0	0

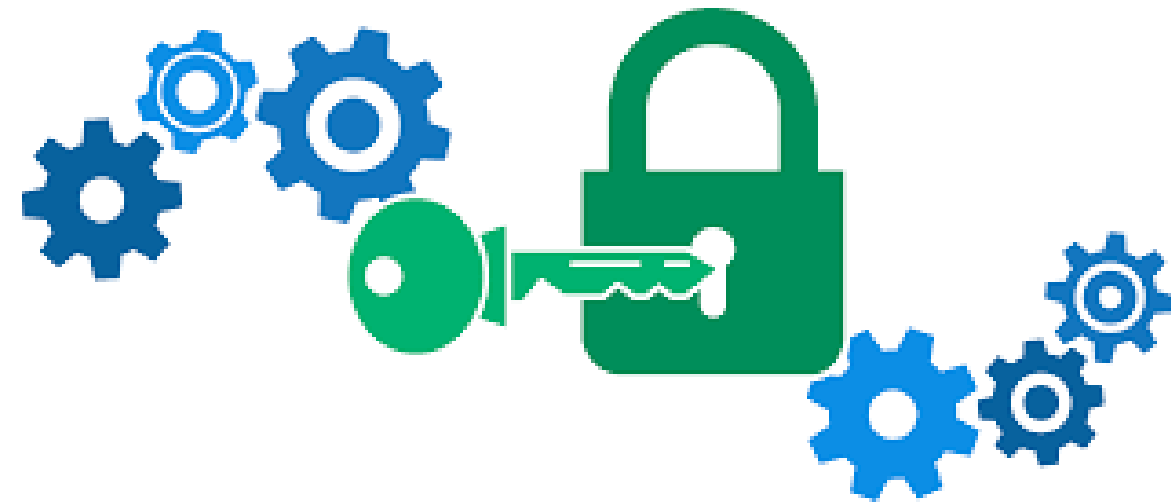


New HANA Cockpit

- ❑ FIORI UI look and feel
- ❑ Multi system license Management
- ❑ Developers can analyse database objects with ease
- ❑ Execute Memory Analysis
- ❑ Add and Remove Services for Tenant Databases

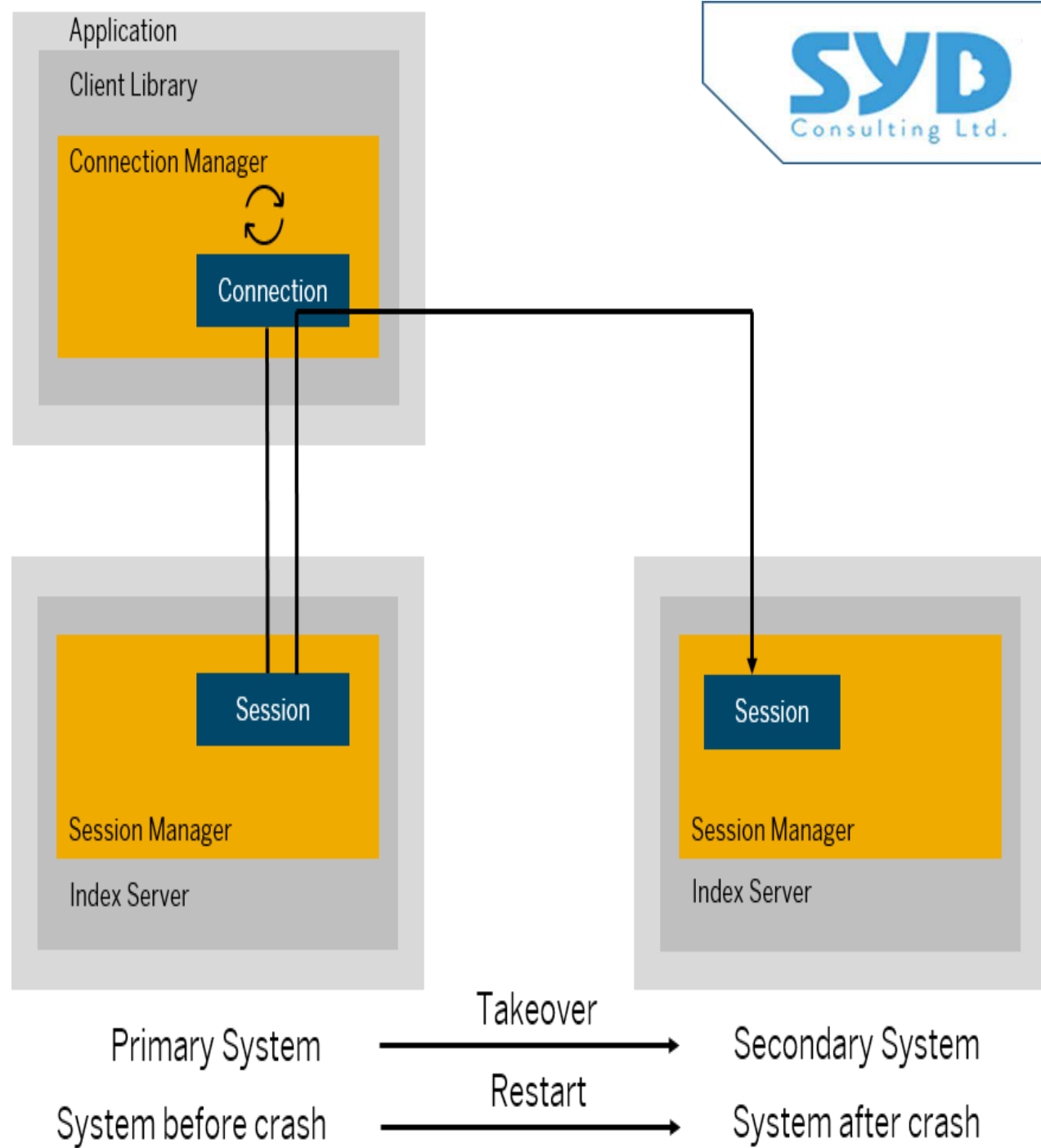
Encryption options

Task	HANA 1.0	HANA 2.0
Redo Log Encryption	✗	✓
Backup Encryption	✗	✓
Root Key Backup possible/required	✗	✓
Password for Root Key Backup possible	✗	✓
Import of root key e.g. after disaster recovery	✗	✓



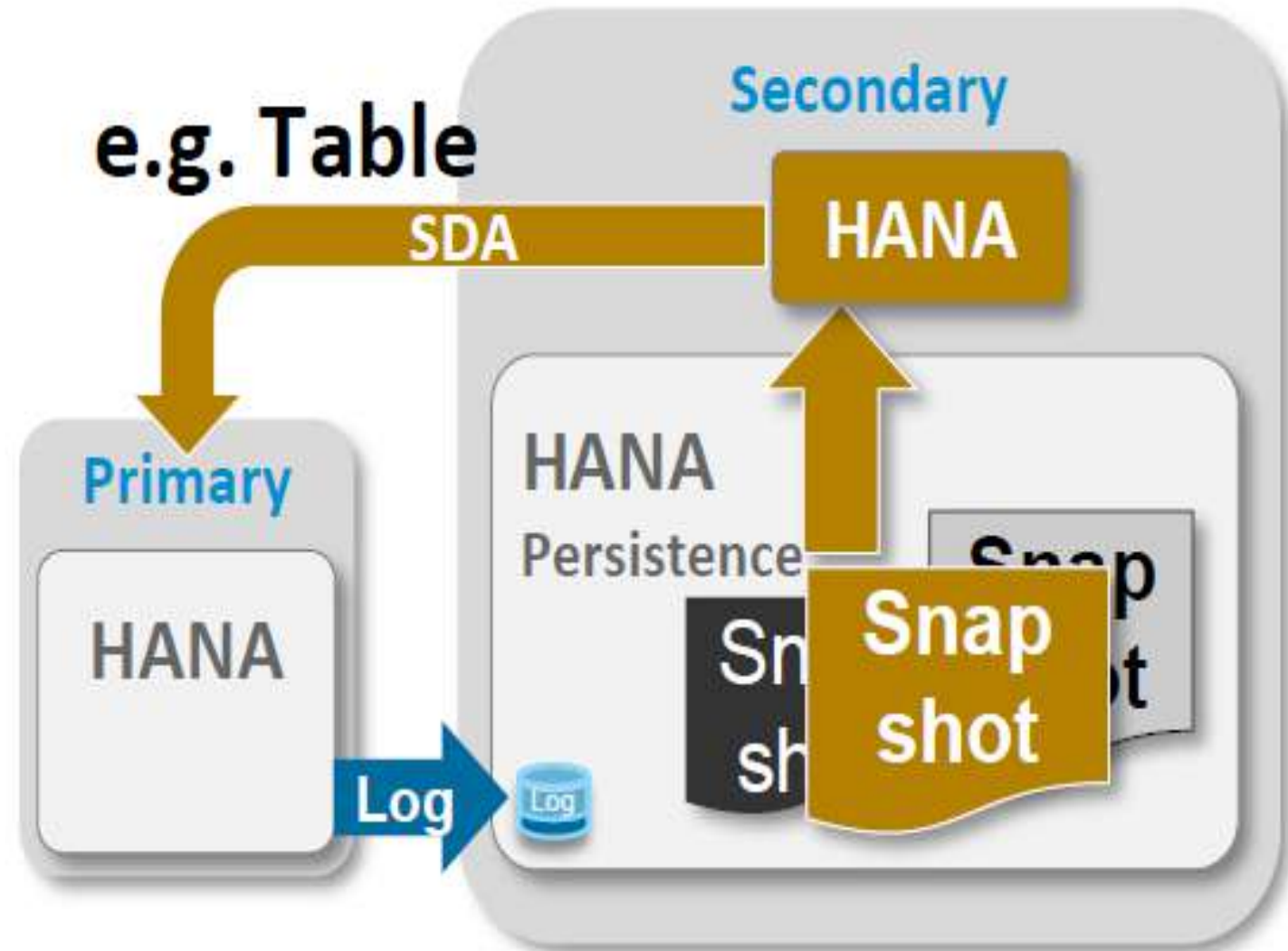
Invisible Takeover

- ✓ During a standard takeover you switch your active system from the current primary system to the secondary system.
- ✓ The primary system loses all connections to the client.
- ✓ Invisible takeover ensures an automatic recovery of client sessions after takeover to your new HANA primary system.



Secondary Time Travel

- ✓ Time travel to an earlier version of SAP HANA in the secondary system.
- ✓ Enable roll back of changes and access deleted information
- ✓ Mitigate the consequences of a wide range of disaster scenarios, from improper system configuration, to data corruption, to security breaches



Fast Restart Option

- ✓ The SAP HANA Fast Restart leverages the SAP HANA Persistent Memory concept for accelerated start-up times so that data can be quickly reloaded into memory and system downtimes minimized.

